



EMERALD WORLD SCHOOL

Majri Grant, Doiwala, Dehradun

Ideate

Learn

Discover

Create

Excel

PROSPECTUS



“Empowering Young Minds for a Brighter Future”

Welcome to Emerald World School. It is a privilege to welcome you at this premier institute set in the foothills of Himalayas, with an aim of imparting unparalleled and exceptional education for the overall personality development. It is a Co-educational, English medium school based on CBSE pattern with a Motto “Learners Today, Leaders Tomorrow”.

ABOUT US

Established in 2025, the school has an environmental friendly, lush green aesthetically designed campus to provide a conducive atmosphere for learning and playing.

At Emerald World School, we believe that education is not just about academics—it's about nurturing young minds, building character, and shaping the future.

VISION

To become a beacon of educational excellence where learners are inspired, nurtured, and empowered to impact their communities and the world.

Established with a vision to provide a holistic and inclusive learning environment, our school is dedicated to the all-round development of every child.

We offer a safe, stimulating, and supportive atmosphere where curiosity is encouraged, creativity is celebrated, and learning becomes a joyful experience. With a team of passionate educators, modern infrastructure, and a student-centered approach, we strive to lay strong foundations for lifelong learning and responsible citizenship.

Here we don't just teach—we inspire, guide, and empower our students to discover their potential and shine in every sphere.

OUR MISSION

- To deliver a rich, balanced, and globally relevant curriculum.
- To nurture confident, creative, and compassionate individuals.
- To instill values of integrity, empathy, and responsibility.



“Education should not only aim at making a child literate, but also to make them good human beings.”

Dear Parents and Guardians,

It gives me immense pleasure to welcome you to Emerald World School, a place where learning is meaningful, inclusive, and inspiring. At Emerald, we believe that every child is unique and holds the potential to make a difference in the world.

Our dedicated faculty and staff work tirelessly to create a nurturing environment where students are encouraged to question, explore, and grow. We offer a dynamic blend of academic rigor, innovation, and personal development opportunities that prepare our learners not just for examinations, but for life. We are committed to create an environment where curiosity is encouraged, creativity is celebrated, and values are instilled. Whether it's through project-based learning, technology integration, or character education, we strive to ignite curiosity and build resilience in every student. At Emerald, we are not just educating minds—we are shaping future leaders, thinkers, and responsible global citizens. We believe that--

“Each child is a different kind of flower, and all together, they make this world a beautiful garden.”

I invite you to explore our campus, meet our passionate team, and become part of this exciting journey.

Warm Regards,

MRS. SONIA GULATI

Principal, Emerald World School



MANAGING DIRECTOR'S MESSAGE

Dear Families,

The foundation of Emerald World School rests on a simple belief: that a well-rounded, values-based education can transform not only individuals, but communities and nations.

As the Managing Director, my vision was to create more than just a school—I wanted to build a learning ecosystem that nurtures academic brilliance, emotional intelligence, and ethical leadership. Emerald is the realization of that dream: a place where modern education meets timeless values.

Our investment in world-class facilities, international curriculum, and highly trained educators is all driven by one goal—to give your child the best possible start in life. We are proud to offer an environment that celebrates diversity, encourages innovation, and fosters a spirit of service.

We are honored to partner with you in shaping the future of your children—and, indeed, the future of our world.

Sincerely,

Mr. Pritpal Singh Dhillon

Managing Director, Emerald World School



PRINCIPAL'S MESSAGE





DIRECTOR'S MESSAGE

Dear All,

It gives me immense pride and pleasure to welcome you to Emerald World School – a place where learning is celebrated, individuality is respected, and every child is encouraged to dream, discover, and achieve.

At our school, we believe education goes far beyond textbooks. It is about shaping character, instilling values, and building a foundation that prepares children for life. With a team of dedicated educators, modern infrastructure, and a child-centric approach, we ensure that every student receives personal care, guidance, and the freedom to explore their true potential.

Our mission is to foster academic excellence while also nurturing emotional intelligence, leadership skills, creativity, and a strong sense of responsibility in every learner. As we grow, our vision remains steadfast – to create confident, compassionate, and capable individuals who are rooted in values yet ready to embrace the future.

We warmly invite you to become a part of this inspiring journey and witness your child's transformation in an environment filled with learning, care, and endless possibilities.

Warm Regards,

Mr. Rajveer Singh

Director, Emerald World School



GENERAL MANAGER'S MESSAGE



Dear Parents and Students,

It gives me great pleasure to welcome you to our school family. At our institution, we strive to create a nurturing environment where every child is encouraged to explore, learn, and grow with confidence. Our goal is to provide a balanced education that combines academic excellence with moral values and life skills.

We believe that education is a shared journey between the school, parents, and students, and together we can help each child reach their fullest potential.

Warm regards,

Mr. Charanjeet Singh
General Manager

Holistic Learning at Emerald World

Emerald World School offers a comprehensive learning programme that extends far beyond the confines of a classroom. Students have countless opportunities to assimilate knowledge, discover hidden talents, follow dreams and grow into well-rounded individuals. Through different facets of the residential, boarding and day scholastic programmes, a range of skills, attributes and values are built and nurtured in the students, to ensure their holistic development.

Skills	Attributes	Values
Analytical	Mindfulness	Empathy
Logical	Public Speaking	Dedication
Critical	Team Spirit	Humility
Communication	Discipline	Integrity
Leadership	Digital Literacy	Respect

Every activity, both inside and outside the classroom, at Emerald World contributes towards the learning process in different, but equally meaningful ways. Children are strongly encouraged to participate in every aspect of school-life and receive support and guidance from experienced faculty members at all times.



ACADEMIC PROGRAMMES

- We provide a Holistic Curriculum for students aged 3 to 18 years.
- Early Years (Playgroup to UKG): Learning based on Play Way Method & Foundational Skills.
- Primary (Grades 1st to 5th): Core Subjects, Activity based Learning, Creativity & Social Skills.
- Middle School (Grades 6th to 8th): Research based learning, Leadership Skills & Critical Thinking.
- With a limited number of students in a class, every child receives the personal attention that he/she deserves and needs.
- Innovative problem-solving techniques, questioning, and active participation in discussions are strongly encouraged to build curiosity and confidence.
- Unique teaching methods are used to make learning a fun, interactive and engaging process.
- Teachers are approachable and friendly, forming a parent-like association with every child.

BEYOND THE CLASSROOM

- **CLUBS:** Computers, Science, Cookery, Yoga & Aerobics and Painting etc. are allocated to students as per their hobbies.
- **COMPETITIONS:** Music & Dance, Debates, Extempore, Dramatics, Art & Craft, Cooking without Fire, Spelling Bee and many more are held in school during the session.
- **TRIPS & TOURS:** Educational Excursions and Picnics are also scheduled during the year to make students aware about their City and State.
- **SERVICE PROJECTS:** Environmental Campaigns and Charity Drives are also performed time to time to develop Empathy among students.

Snapshots of Excellence



Campus Facilities



Admission Criteria

Emerald World School welcomes the child to an enriching and joyful learning experience, The Admission Procedure is completely transparent and has been designed to ensure a suitable fit between what the parents and children expect from the School and what the School in turn can offer them.

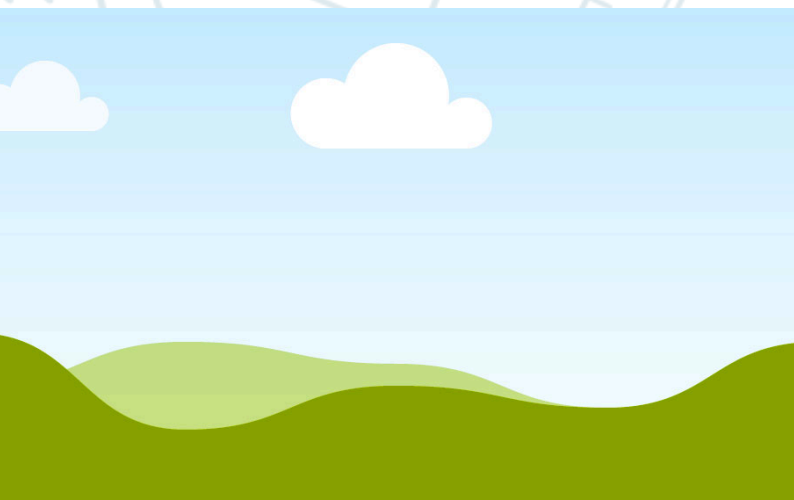
Age Eligibility

Admission will be granted to the candidates only if they fulfill the age criteria mentioned below:

Grade	PG	Nursery	LKG	UKG	I	II	III	IV	V	VI	VII	VIII
Age	2+	3+	4+	5+	6+	7+	8+	9+	10+	11+	12+	13+

Admission Process

- **Schedule a School Tour** : Visit our campus to explore facilities and understand our learning environment.
- **Fill the Admission Form** : Complete and submit the Admission Form available at the school office or on our website.
- **Entrance Test** (Grade Ist Onwards) : Child has to appear for a short test to assess academic readiness.
- **Family Interview** : Selected applicants with their parents have to attend an interaction with the Admission Panel.
- **Submit Documents** : Submit the required documents along with the Form, including Birth Certificate, Previous Report Cards, and Photographs.
- **Confirm Admission** : Admission is confirmed after approval, document verification, and fee payment.





LEARNERS TODAY LEADERS TOMORROW



EMERALD WORLD SCHOOL

Majri Grant, Doiwala, Dehradun (UK)

emeraldworldschool@gmail.com

Ph. 9997587455